



# Eloy Transit Feasibility Study

## Transit Technical Advisory Meeting

Survey Results and Draft Corridor Recommendations

December 6<sup>th</sup>, 2018

# Agenda

- Review of Previous Findings
  - Survey results
  - Near term transit recommendations
  - Cost
- Mid-term recommendations
  - Routing / destinations
  - Cost
- Long-term recommendations
  - Routing / destinations
  - Cost
- Implementation Program
- Study next steps



# Survey Results

**81% live in Eloy**

**74% would use transit if available**

## Why ride transit

- 45% say transit is good for the environment
- 40% Cost of fuel for car is high

## Types of transit trips within Eloy

- 43% Shopping
- 33% Health/medical purposes
- 25% Work



# Survey Results

## Where would you go within Eloy?

- 58% Grocery
- 30% Family Health Center

## How many days per week?

- 34% 2-3 days per week
- 19% 4-5 days per week

## What days per week?

- 54% weekdays
- 26% weekends



# Survey Results

## Where do people want to go within the region?

- 70% would use transit to Casa Grande
- 29% would use transit to Coolidge

## Types of transit trips within the region?

- 48% Shopping
- 37% Health/medical purposes

## Where do people want to go within the region?

- 57% Walmart
- 51% Medical in Casa Grande
- 49% Fry's
- 14% Central Arizona College





# Survey Results

## How many days per week would you use transit within the region?

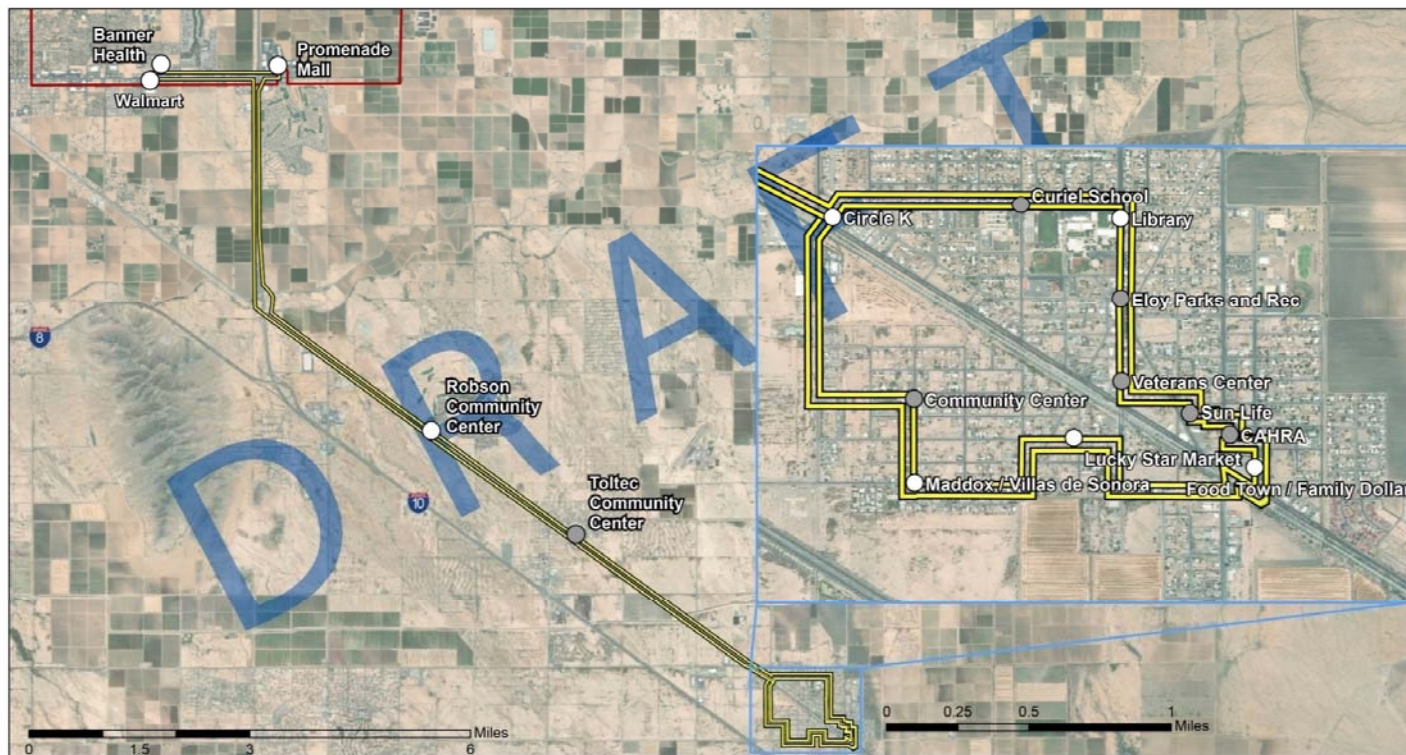
- 38% 1-3 days per week
- 27% 3-7 days per week

## What days per week?

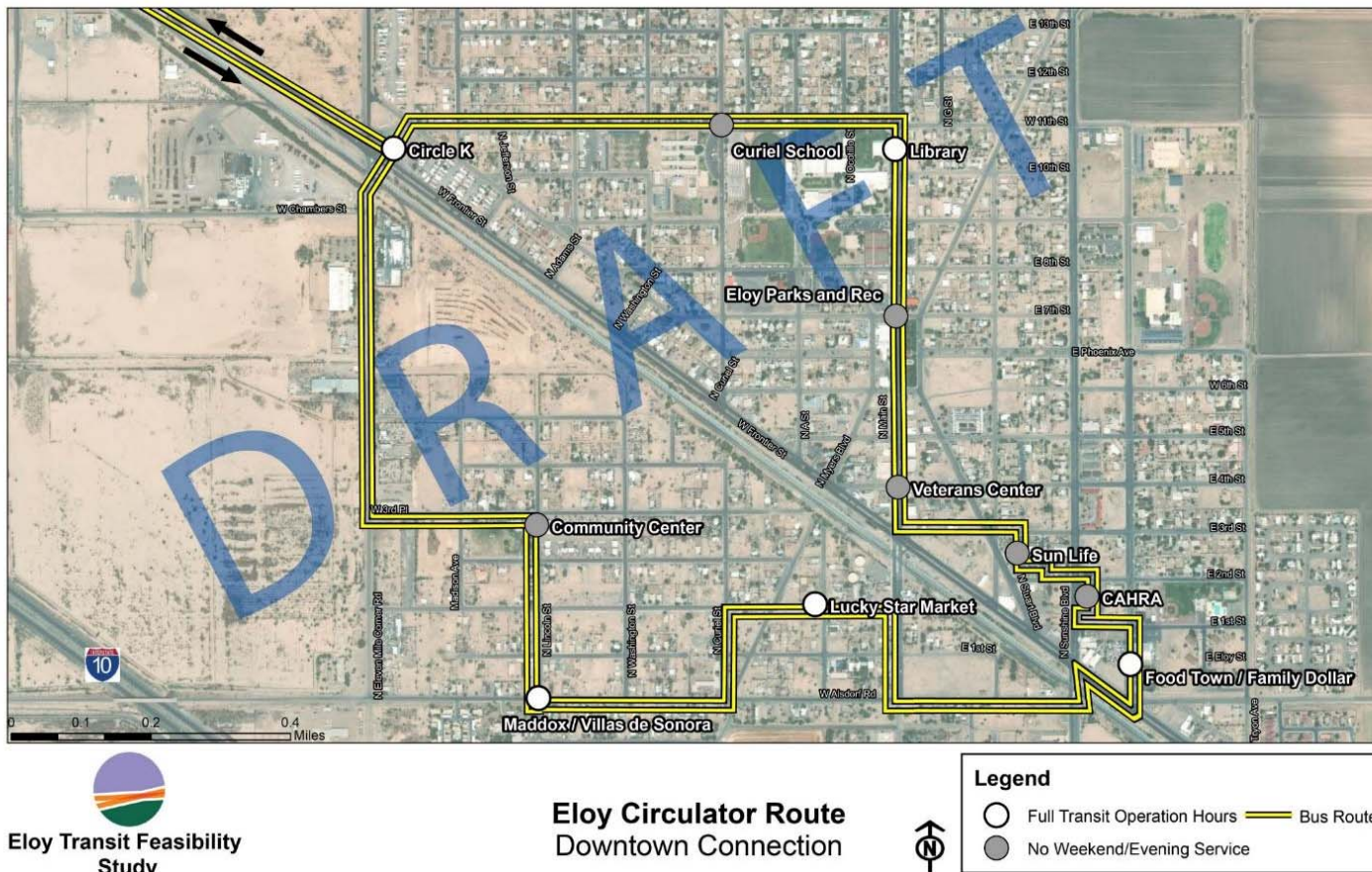
- 53% weekdays
- 26% weekends



# Near-term Recommendation



# Near-term Recommendation





# Near-term Recommendation

## Route Characteristics

- 7am – 7pm
- Two vehicles
- Six runs per day (weekday)
- Clockwise and Counterclockwise
- Flagged stops in Downtown Eloy
- Flex service within Eloy
- Reduced service in evenings and Saturday
- Potential for extension to CoreCivic



12/6/2018

# Near-term Recommendation

## Financial Overview

Total Annual Cost	
Estimated Total Annual Cost (Weekday Service)	\$267,900
Estimated Total Annual Cost Match (Saturday Service)	\$53,600

**Eloy – Casa Grande:** 6 runs per day counterclockwise and clockwise (12 total)

Total Annual Local Match	
Estimated Annual Local Match (Weekday Service)	\$104,600
Estimated Annual Local Match (Saturday Service)	\$21,000

Total Monthly Local Match	
Estimated Monthly Local Match (Weekday Service)	\$8,700
Estimated Monthly Local Match (Saturday Service)	\$1,700

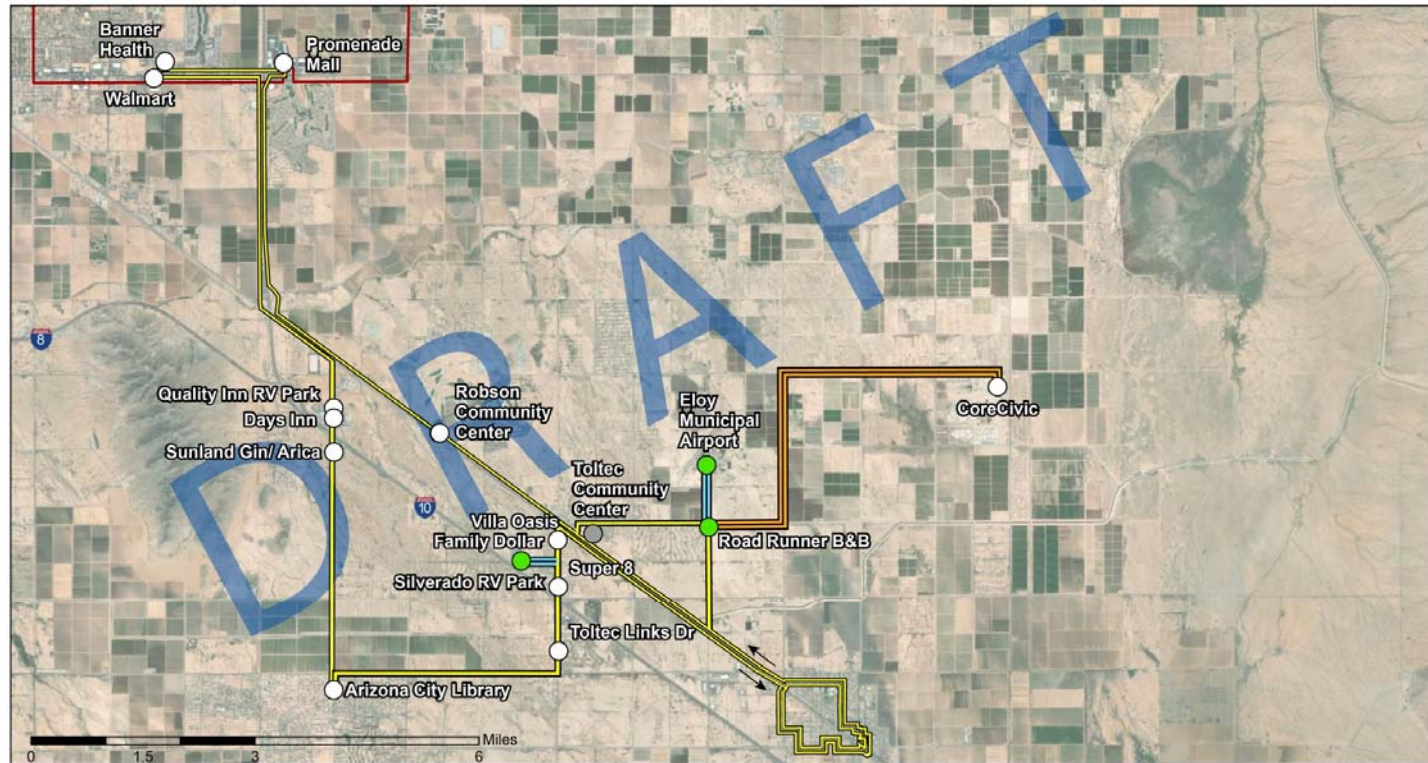
# Near-term Recommendation

## Financial Overview

<b>CoreCivic Extension Total Annual Cost</b>	
Estimated Annual Additional Local Match (Weekday)	\$7,300
Estimated Annual Additional Local Match (Saturday)	\$1,500

<b>Arizona City Extension Total Annual Cost</b>	
Estimated Annual Additional Local Match (Weekday)	\$5,800
Estimated Annual Additional Local Match (Saturday)	\$1,200

# Mid-Term Local Service Scenario 1 – Arizona City





# Mid-term Recommendation

## Financial Overview – Scenario 1

Total Annual Cost	
Estimated Total Annual Cost (Weekday Service)	\$331,000
Estimated Total Annual Cost Match (Saturday Service)	\$10,200

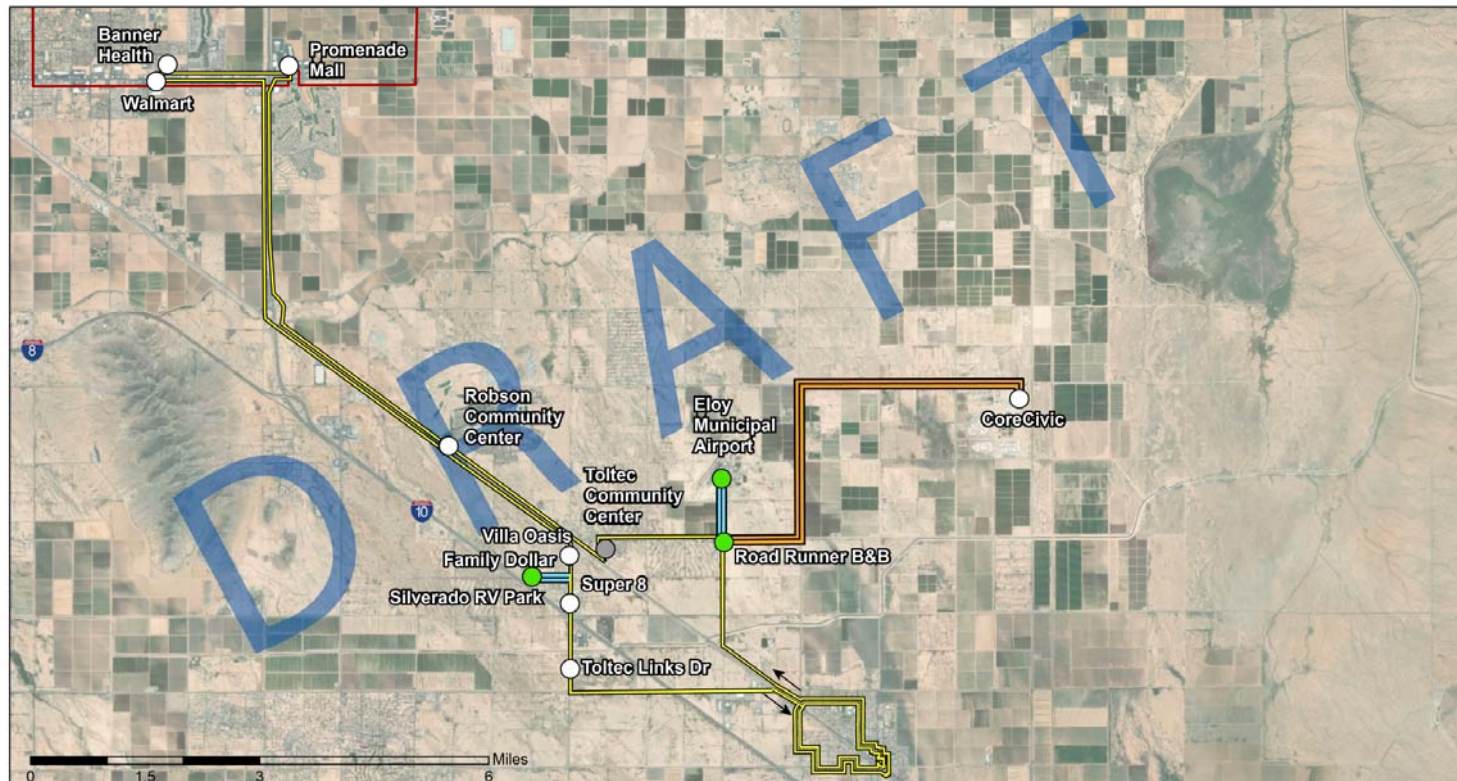
Total Annual Local Match Scenario A (Eloy – Casa Grande)	
Estimated Annual Local Match (Weekday Service)	\$128,900
Estimated Annual Local Match (Saturday Service)	\$4,000

Total Monthly Local Match Scenario A (Eloy – Casa Grande)	
Estimated Monthly Local Match (Weekday Service)	\$10,700
Estimated Monthly Local Match (Saturday Service)	\$400



Four morning, three afternoon, and two evening runs

# Mid-Term Local Service Scenario 2 – Toltec



# Mid-term Recommendation

## Financial Overview – Scenario 2

Total Annual Cost	
Estimated Total Annual Cost (Weekday Service)	\$358,400
Estimated Total Annual Cost Match (Saturday Service)	\$10,700

Total Annual Local Match Scenario B (Robson – Casa Grande)	
Estimated Annual Local Match (Weekday Service)	\$131,100
Estimated Annual Local Match (Saturday Service)	\$4,200

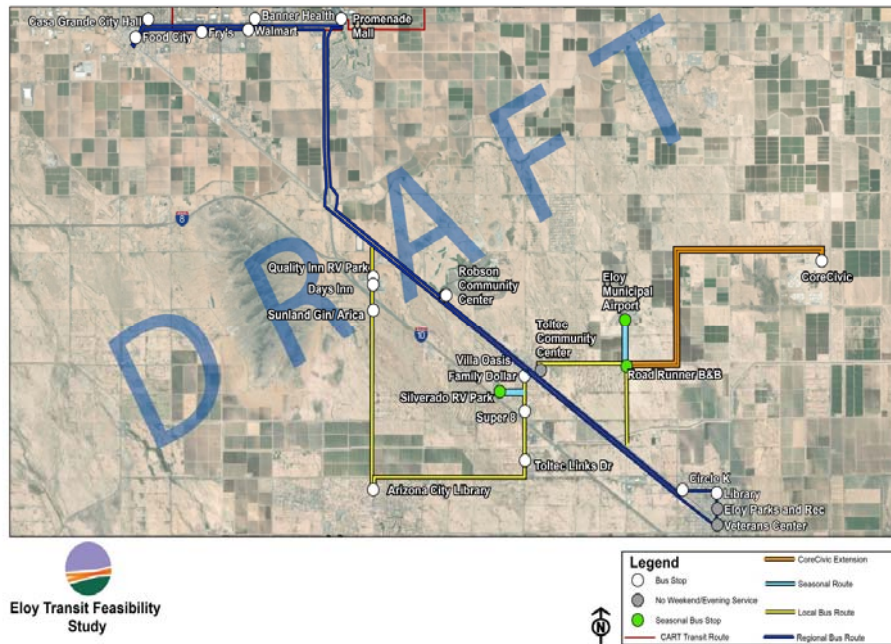
Total Monthly Local Match Scenario B (Robson – Casa Grande)	
Estimated Monthly Local Match (Weekday Service)	\$12,000
Estimated Monthly Local Match (Saturday Service)	\$300



Five morning, five afternoon, and two evening runs



# Long-Term Routing, Regional Scenario 1





# Long-Term Recommendation – Regional Scenario 1

## Eloy to Casa Grande

Total Annual Cost	
Estimated Total Annual Cost (Weekday Service)	\$68,400
Estimated Total Annual Cost Match (Saturday Service)	\$11,400

Total Annual Local Match Scenario C (Eloy – Casa Grande)	
Estimated Annual Local Match (Weekday Service)	\$54,300
Estimated Annual Local Match (Saturday Service)	\$4,500

Total Monthly Local Match Scenario C (Eloy – Casa Grande)	
Estimated Monthly Local Match (Weekday Service)	\$1,900
Estimated Monthly Local Match (Saturday Service)	\$400

Three morning, and two afternoon runs



# Long-Term Recommendation – Regional Scenario 1

## Total System Cost

### Regional and Local Service to Arizona City

Total Annual Cost	
Estimated Total Annual Cost (Weekday Service)	\$399,400
Estimated Total Annual Cost Match (Saturday Service)	\$21,600

Total Annual Local Match Scenario C (Eloy – Casa Grande)	
Estimated Annual Local Match (Weekday Service)	\$183,200
Estimated Annual Local Match (Saturday Service)	\$8,500

Total Monthly Local Match Scenario C (Eloy – Casa Grande)	
Estimated Monthly Local Match (Weekday Service)	\$12,600
Estimated Monthly Local Match (Saturday Service)	\$800

### Regional and Local Service to Toltec

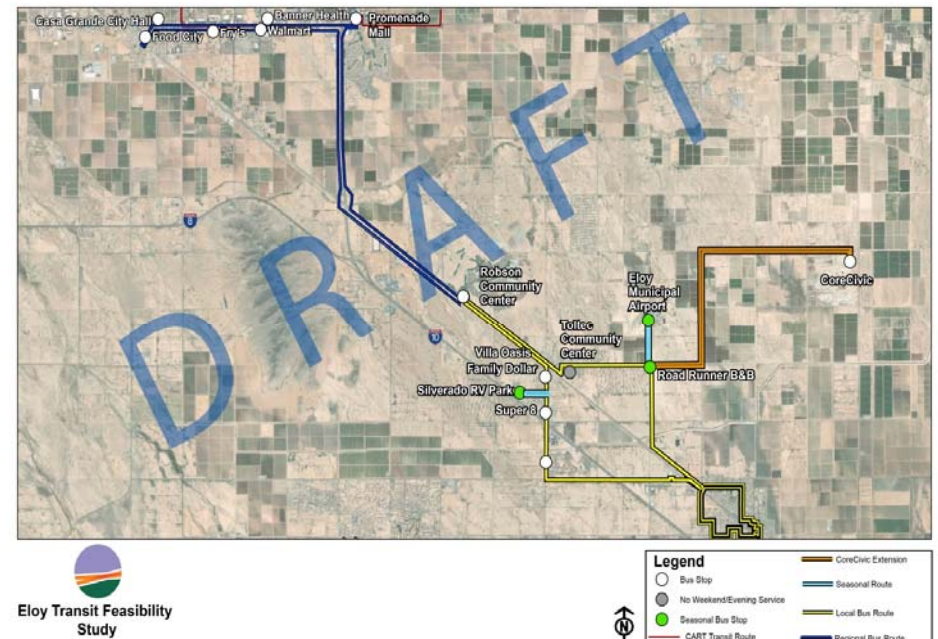
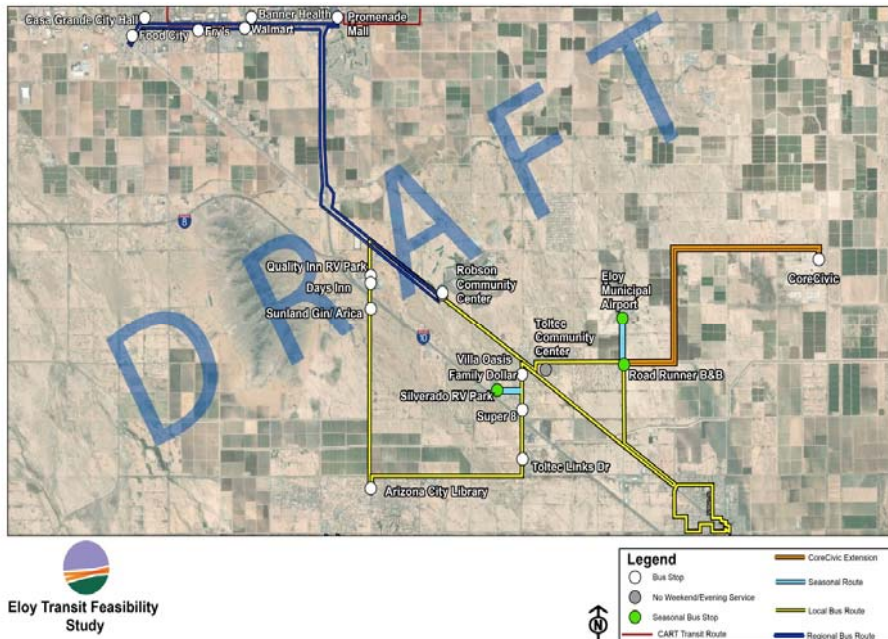
Total Annual Cost	
Estimated Total Annual Cost (Weekday Service)	\$426,800
Estimated Total Annual Cost Match (Saturday Service)	\$22,100

Total Annual Local Match Scenario C (Eloy – Casa Grande)	
Estimated Annual Local Match (Weekday Service)	\$185,400
Estimated Annual Local Match (Saturday Service)	\$8,700

Total Monthly Local Match Scenario C (Eloy – Casa Grande)	
Estimated Monthly Local Match (Weekday Service)	\$13,900
Estimated Monthly Local Match (Saturday Service)	\$700



# Long-Term Routing, Regional Scenario 2



# Long-Term Recommendation – Regional Scenario 2

## Robson Ranch to Casa Grande

Total Annual Cost	
Estimated Total Annual Cost (Weekday Service)	\$30,300
Estimated Total Annual Cost Match (Saturday Service)	\$6,200

Total Annual Local Match Scenario D (Robson – Casa Grande)	
Estimated Annual Local Match (Weekday Service)	\$12,000
Estimated Annual Local Match (Saturday Service)	\$2,400

Total Monthly Local Match Scenario D (Robson – Casa Grande)	
Estimated Monthly Local Match (Weekday Service)	\$1000
Estimated Monthly Local Match (Saturday Service)	\$200

Three morning, and two afternoon runs





# Long-Term Recommendation – Regional Scenario 2

## Total System Cost

### Regional and Local Service to Arizona City

Total Annual Cost	
Estimated Total Annual Cost (Weekday Service)	\$361,300
Estimated Total Annual Cost Match (Saturday Service)	\$16,400

Total Annual Local Match Scenario D (Robson – Casa Grande)	
Estimated Annual Local Match (Weekday Service)	\$140,900
Estimated Annual Local Match (Saturday Service)	\$6,400

Total Monthly Local Match Scenario D (Robson – Casa Grande)	
Estimated Monthly Local Match (Weekday Service)	\$11,700
Estimated Monthly Local Match (Saturday Service)	\$600

### Regional and Local Service to Toltec

Total Annual Cost	
Estimated Total Annual Cost (Weekday Service)	\$388,700
Estimated Total Annual Cost Match (Saturday Service)	\$16,900

Total Annual Local Match Scenario D (Robson – Casa Grande)	
Estimated Annual Local Match (Weekday Service)	\$143,100
Estimated Annual Local Match (Saturday Service)	\$6,600

Total Monthly Local Match Scenario D (Robson – Casa Grande)	
Estimated Monthly Local Match (Weekday Service)	\$13,000
Estimated Monthly Local Match (Saturday Service)	\$500

12/6/2018

# Potential Funding Contributions

Potential Contribution Source	Potential Contribution Amount (Monthly)
Intercity Bus Service	Up to \$5,000
Advertising	\$1,000 - \$ 4,000
Regional Partnerships	\$1,000 - \$5,000
Total	\$3,000 - \$14,000



# Implementation Program

- Schedule – Key Milestones
- Topics
  - Governance
  - Administration
  - Agency Coordination
    - SCMPO
    - ADOT
  - FTA Requirements
    - Title VI
    - Procurement
    - ADA
    - Public Involvement
    - Legal / Financial
    - Equal Employment Opportunities
    - NTD Reporting
    - Drug and Alcohol Program



# Study Schedule

- Feedback on Draft Final Plan:
  - Downtown Advisory Commission – December 12
  - City Council (Working Session) –December 17
- Presentation of Final Plan:
  - SCMPO Executive Board Meeting: January 8
  - Eloy City Council: January 14
- Approval of Final Plan
  - SCMPO Executive Board: March 12
  - Eloy City Council: March 25





# Thank you!

**SCMPO Project Manager**

Jason Hafner

[jhafner@scmpo.org](mailto:jhafner@scmpo.org) | 520-705-5153

**Eloy Project Manager**

Jon Vlaming

[jvlaming@eloyaz.gov](mailto:jvlaming@eloyaz.gov) | 520-466-2578

