

Regional Transportation Plan (RTP)

What is an RTP?

- 20-year blueprint for transportation
- Required by law to be updated every 4 years
- Plans how to invest federal funds - fiscally constrained

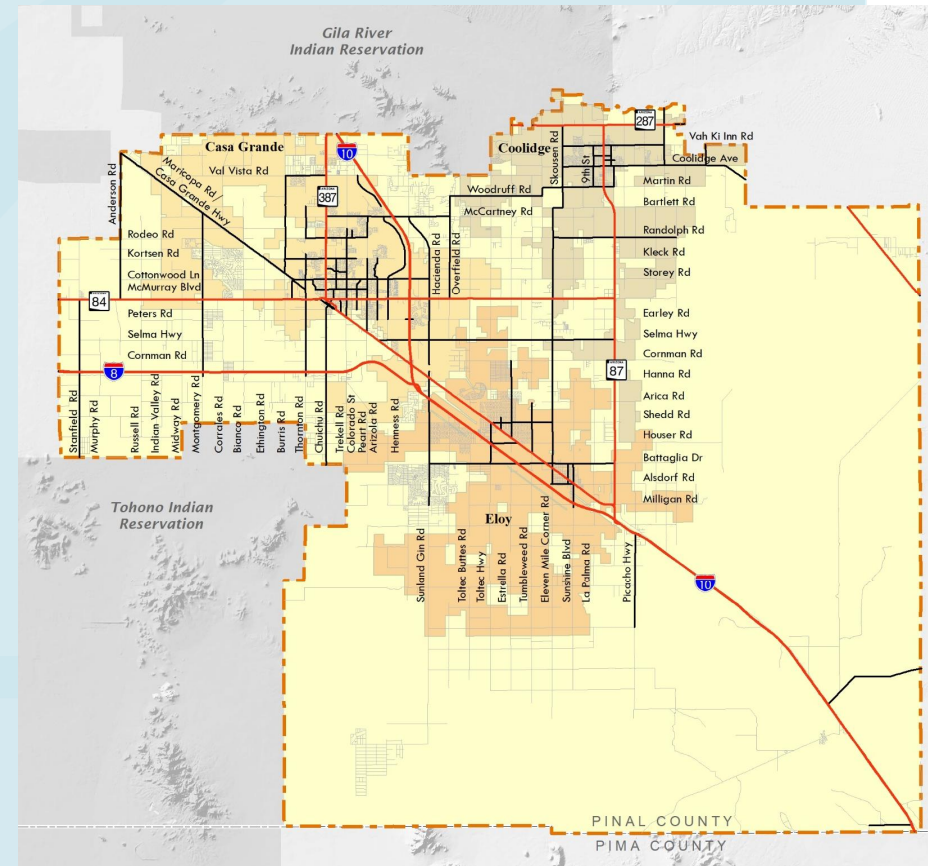
Outcomes of the RTP:

- Investment strategy for future funding
- Planned performance and safety benefits
- Policy guidance
- Demonstration of air quality conformity

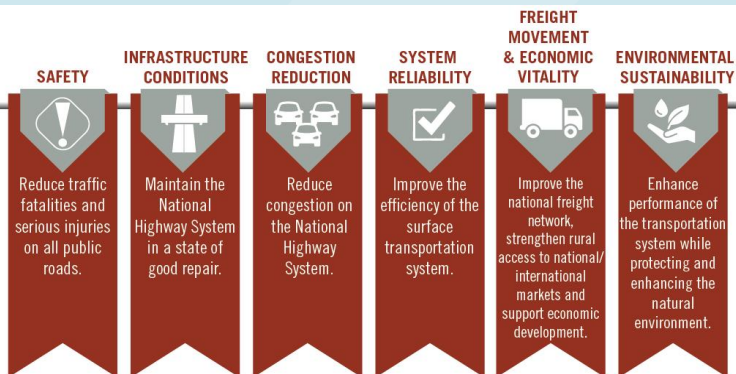
The RTP reflects plans prepared by local agencies



Sun Corridor MPO Planning Area



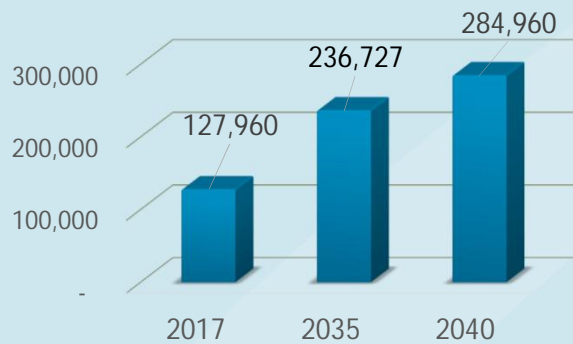
Sun Corridor MPO Regional Transportation Plan Goals



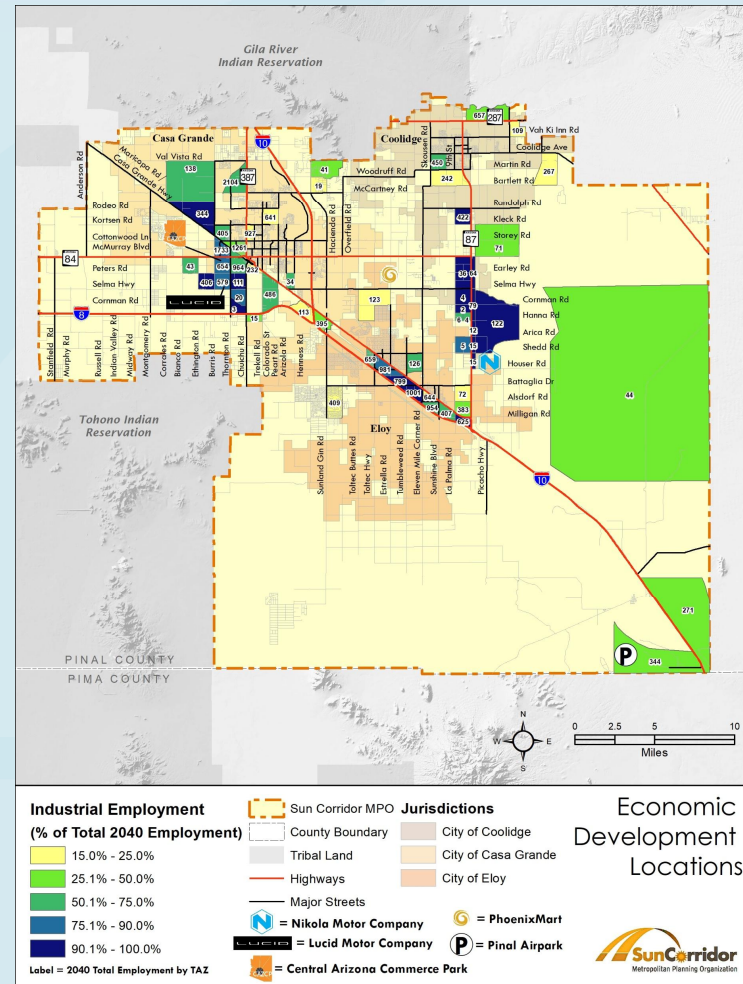
Sun Corridor REGIONAL TRANSPORTATION PLAN

Population and Employment Growth

Population Growth



Employment Growth




Sun Corridor MPO Region's Transportation Systems

AIRPORTS
4 
AIRPORTS

Coolidge, Eloy, Casa Grande, and Pinal Airpark

BICYCLE
1 U.S. BICYCLE
ROUTE 

*U.S. Bicycle Route 90 spans from California to Florida and traverses Arizona, including through the Sun Corridor region, in a continuous **573-mile** route between California and New Mexico.*

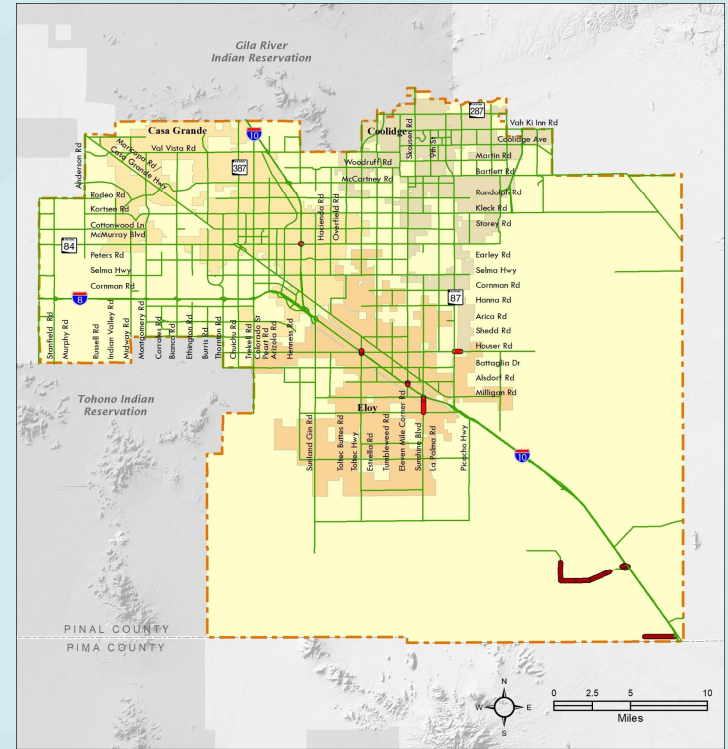
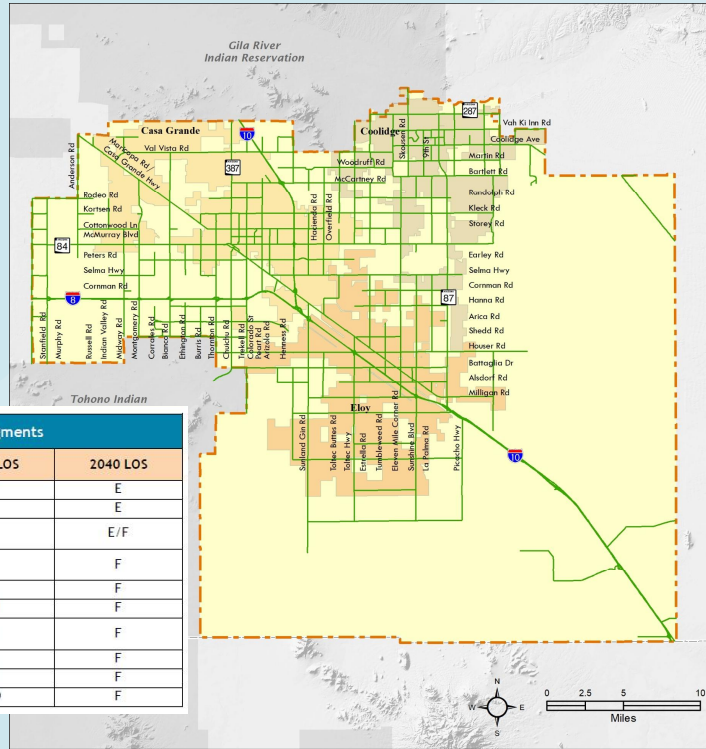
ROADWAYS
2,737 
MILES

of arterials, collectors, and local streets.

TRANSIT
2 TRANSIT
SYSTEMS 

*Central Arizona Regional Transit and Cotton Express collectively provide more than **33,000 rides per year.***

Roads and Streets

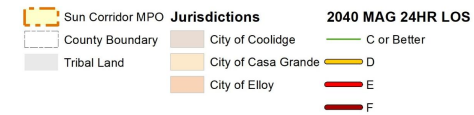
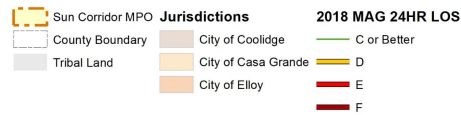


Future Travel Demand Volumes on Selected Road Segments

Road	From	To	2035 LOS	2040 LOS
Sunshine Boulevard	Phillips Road	I-10	D	E
Battaglia Road	SR 87	Vail Road	A	E
Toltec Road	I-10 Eastbound Ramps	Houser Road	C	E/F
Eleven Mile Corner Road	I-10 Westbound Ramps	Aldorf Road	C	F
Pinal Airpark Road	Pinal Airpark	I-10	F	F
Cripple Creek Road	Whirt Wind Way	Coachway Road	D	F
Red Rock Road	Camino Correo	I-10 Westbound Ramps	F	F
Camino Correo	Red Rock Road	Sasco Road	F	F
Sasco Road	Aguirre Lane	Camino Correo	F	F
Coachway Road/Sasco Road	Cripple Creek Road	Colony Drive	C/D	F

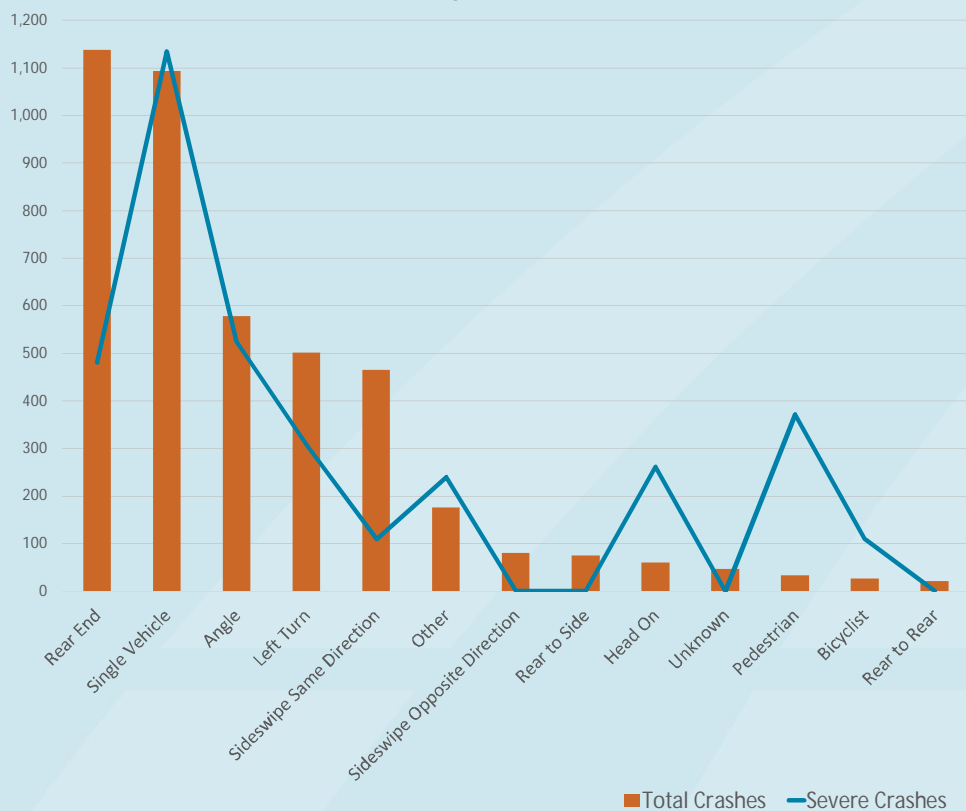
2018 MAG 24HR Level of Service

2040 MAG 24HR Level of Service



Traffic Safety

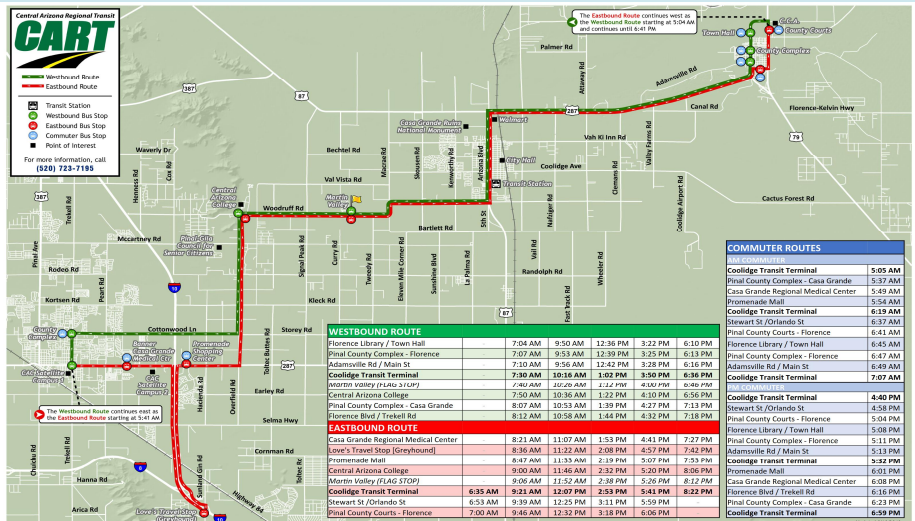
Crash Types 2015-2017



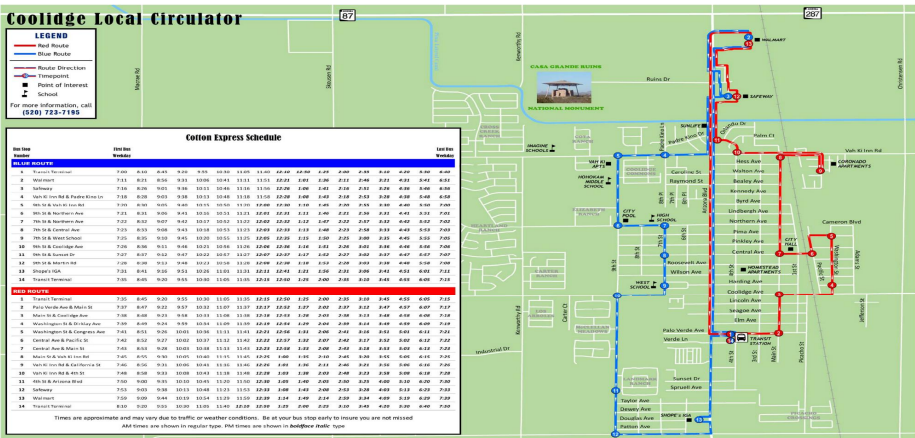
Programmed Safety Projects:

- **Jimmie Kerr Blvd:** Dilemma Zone Warning System, Rumble Strips
- **Macrae Rd:** Rumble Strips
- **Peart Rd:** Left Turn Lane, Transverse Rumble Strips
- **Multiple Roads:** Rumble Strips
- **Cottonwood Ln/Kadota Ave:** Pedestrian Hybrid Beacon (PHB)
- **Multiple intersections:** Systemic LED stop sign replacement project

Transit



- Two public transit systems – CART and the Cotton Express in Coolidge
- Casa Grande and Eloy considering transit systems
- Several organizations provide transit services for seniors and persons with disabilities
- Pinal County Transit Governance Study is studying regional coordination of transit

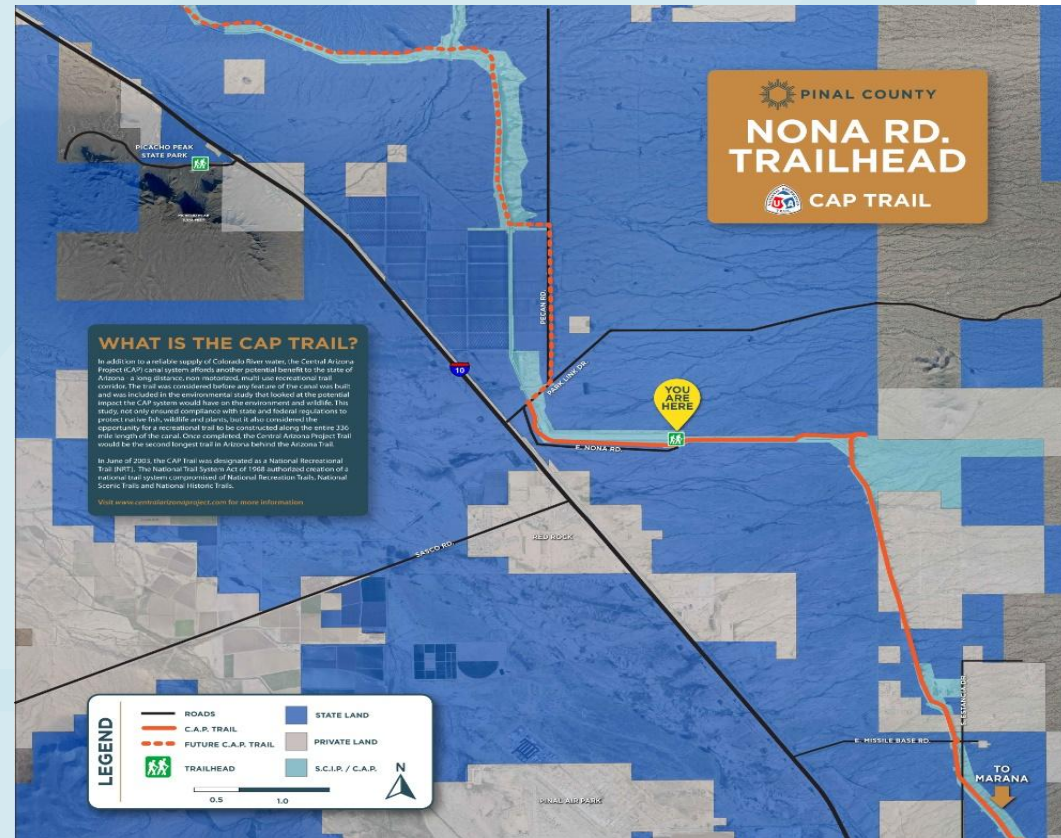


Bicycle and Pedestrian Transportation

Goals:

- Increase facilities over time
- Include bike and pedestrian facilities in road improvement projects

Major project: CAP Recreational Trail/
Nona Road trailhead



Aviation



- Four municipal airports in the SCMPO region:
 - Casa Grande Municipal Airport
 - Coolidge Municipal Airport
 - Eloy Municipal Airport
 - Pinal Airpark

2017 Airport Operations			
Facility Name	Number of Housed or Based Aircraft	Air Taxi Operations	Total Annual Operations
Casa Grande Municipal	92	2,000	119,680
Coolidge Municipal	43	0	4,250
Eloy Municipal	22	0	30,000
Pinal Airpark	15	0	56,857

Best Practices Implementation

Best Practices - Ways the region is providing better, smarter transportation

New dust detection system on I-10, Sunshine Blvd to Picacho Peak Road



More visible stop signs at critical locations



Complete streets to serve all road users, such as Eloy Main Street project



Improved multimodal crossings, such as this beacon on Florence Blvd.



RTP Recommendations - Roadway Implementation Plan

Recommended Investment Strategy (FY 2020-2025)

- Already programmed in the FY 2016-2025 TIP

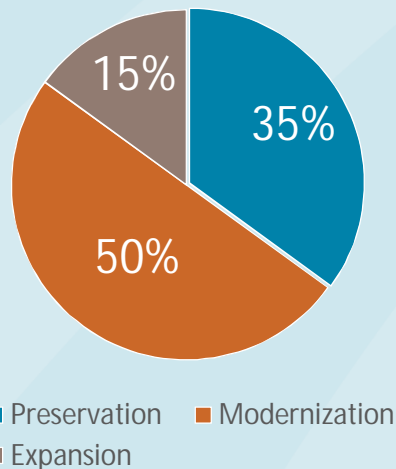
Recommended Investment Strategy (FY 2026-2040)

- Preservation: maintenance, road resurfacing
- Modernization: upgrades to improve efficiency or safety without adding capacity
- Expansion: adding new lanes, new roads

Should additional funds become available:

- Projects of opportunity have been identified by each jurisdiction

Recommended Investment Strategy (FY 2026-2040)



RTP has implementation plans for roadway, transit, and aviation

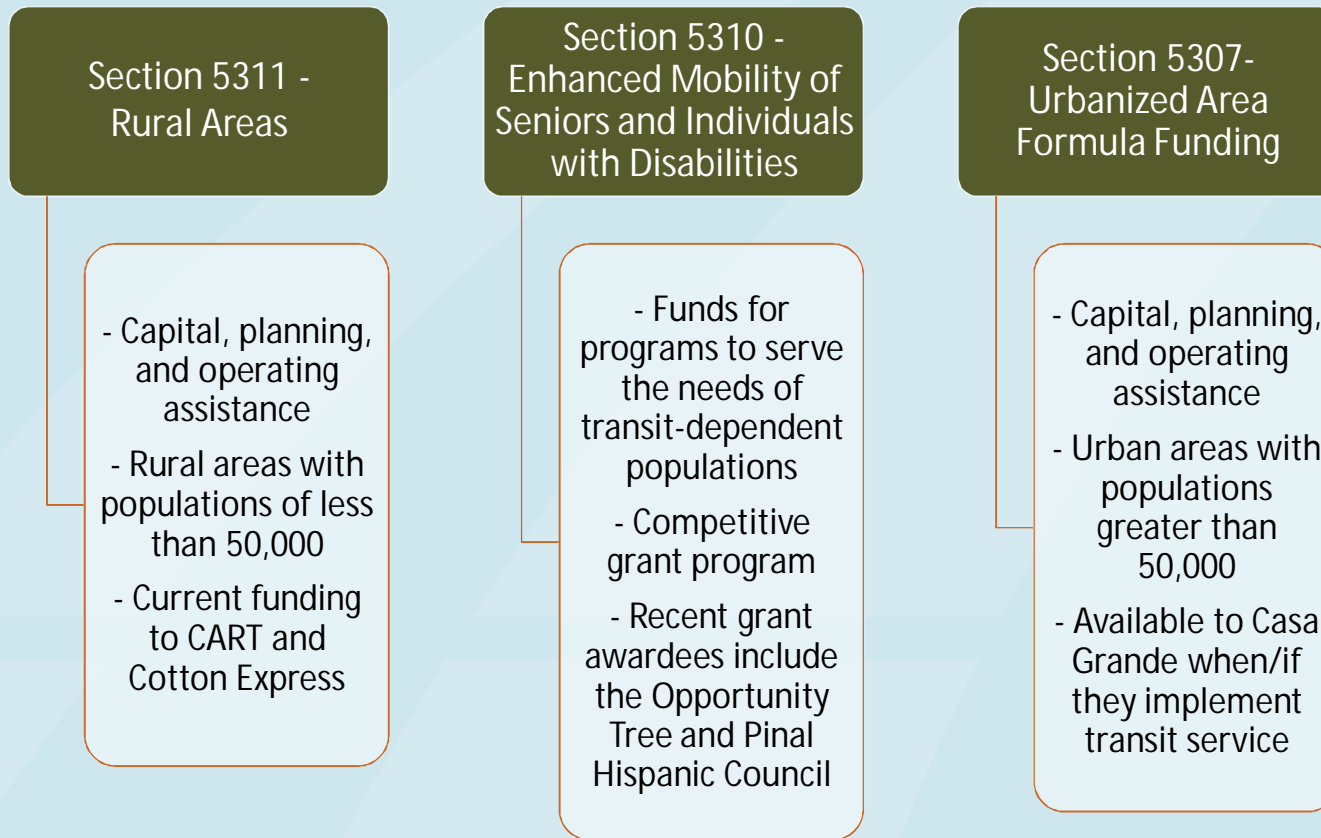
- 20 - year planning horizon (2040)
- RTP must be fiscally constrained
- Projects that are funded must be on the TIP to be programmed for construction and reimbursement

Roadway Funding Sources

- Surface Transportation Block Grant Program – approx. \$591,000 per year
- Highway Safety Improvement Program funds – for projects that improve safety – competitively awarded

RTP Recommendations – Transit Implementation Plan

Key Funding Programs and Transit Providers



RTP Recommendations – Airport Implementation Plan

Recently funded projects listed below. A complete list of planned projects are contained in the RTP

Coolidge Municipal Airport

- \$9.5M FAA grant to develop a new runway, new lighting, and lighting controls
- \$450k grant runway/lighting reconstruction and navigation aid

Eloy Municipal Airport

- \$150k FAA grant for taxiway reconstruction

